



Castle



ATLANTIC DISCOVERY

MULTI-PURPOSE SUPPORT VESSEL

ROGE ROV / SURVEY / CABLE LAY / WALK-TO-WORK / SUBSEA



Castle

VESSEL SPECIFICATIONS



The Atlantic Discovery is the latest addition to the fleet. After operating as a PSV for many years the Atlantic Discovery has undergone a major conversion to allow it to operate as a Multi Purpose Support Vessel. The vessel is capable of operating the ROGE ROV through the Moon Pool in a number of tasks such as Boulder removal, UXO Survey and Clearance. It is also capable of Geotechnical and Geophysical surveys, Walk-to-Work, Cable Lay and recovery.

MAIN FEATURES:

- ◇ ROV + ROGE ROV
- ◇ Supply & Support
- ◇ Survey
- ◇ Kongsberg DP2
- ◇ Towing & PLGR
- ◇ High Power capability plot
- ◇ Walk to Work
- ◇ Deck space: over 600 m²



Castle

VESSEL SPECIFICATIONS

VESSEL

Model:	UT 705 19891
Type:	DP2 Multi Purpose Support Vessel / Accommodation
Port of Registry:	Panama City
Classification:	RINA
Unrestricted Navigation	
Additional Class Notation:	AUT UMS; DYNAPOS AM/AT R

MAIN PARTICULARS

Vessel Built Apr:	1991 Brattvaag, Norway
Vessel Converted:	2018
LOA:	81.9m
Breadth Moulded:	18.00
Summer Draft:	4.98
Gross Tonnage:	2610t
Deadweight:	2998t
Cargo deck:	650m ²
Deck Strength	5t/m ²
Fuel Oil:	1,100m ³
Ballast / Drill Water:	979m ³
Potable Water	792m ³

MACHINERY

Main Engines:	2 x Bergen BRM-6 3,300 BHP Bollard Pull 60 tons
Rudders:	2 x Standard Rudder type
Bow Thrusters:	2 x Rolls Royce 1,000 BHP each
Stern Thrusters:	2 x Rolls Royce 800 BHP each
Gear box:	Frydenbo HS 30x2S
Propellers:	2 x Rolls Royce Marine 600 CPP

POWER

	6,600 BHP
M/E Output:	2430kW @ 750 rpm
Main Alternators:	2 x 1680kW
Aux Generator	2 x 320kW 60 tons BP

BRIDGE EQUIPMENT

Auto Pilot:	1 x Anschutz Autopilot
Radar:	1 x Furuno ARPA Radar
Gyro:	1 x Anschutz Gyrocompass
GPS Navigator:	1 x Trimble GPS Sat Nav 1 x Furuno DGPS Sat Nav
Bridge Nav:	1 x Sagem Speed Log
Bridge Echosounder:	1 x Skipper Echo Sounder

COMMUNICATION EQUIPMENT

1 x Furuno MF/HF Transmitter
1 x Furuno MF/HF Receiver
1 x Sailor R501 Watch Receiver
1 x Sailor VHF RT 2047
1 x Sailor VHF RT 2048
1 x Sailor MF/HF DSC Decoder
2 x Inmarsat C
2 x Fleet 77 Inmarsat
1 x Navtex
2 x Tron Radar Transponder

LOADING GEAR / WINCHES

2 x Capstan 10T
40 ton tow winch

CRANES A Frame: 40T static 20T dynamic

Plus 1 x 7.5t Knuckle boom crane - 28m hook height + stores crane

KONGSBERG SDP 21 DP CLASS 2 DP

REFERENCE SYSTEMS:

3 x DGPS
1 x Taut Wire
1 x Fan Beam

ACCOMODATION

Total Berths 63
5 x 1 Man, 29 x 2 Man, 1 x Gym

A frame: 40T static 20T dynamic

Walk-to-Work Yes (Ampelmann **option**)

Fresh Water Reverse Osmosis Fresh Water Generation

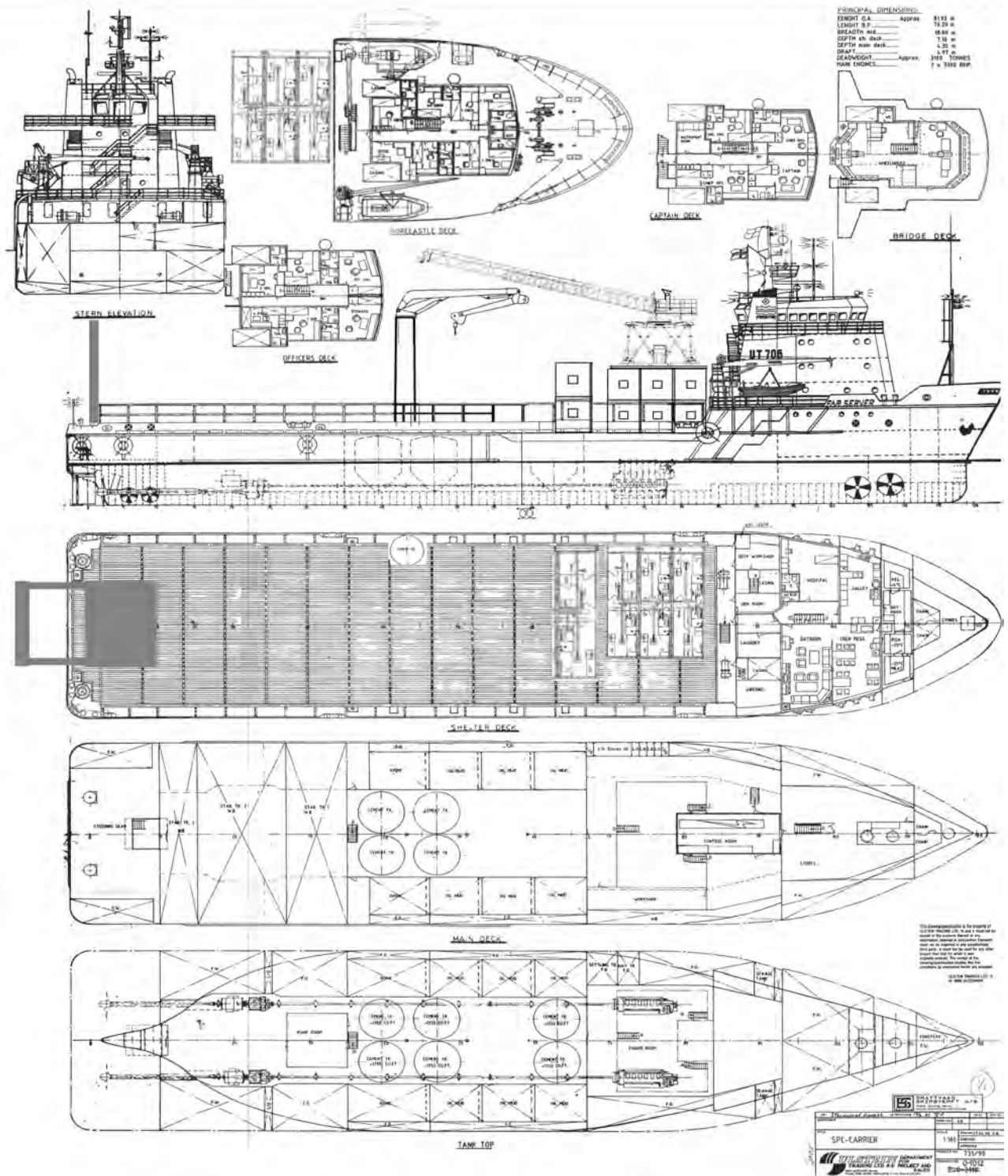
Generator:



Castle

VESSEL SPECIFICATIONS

GA PLAN

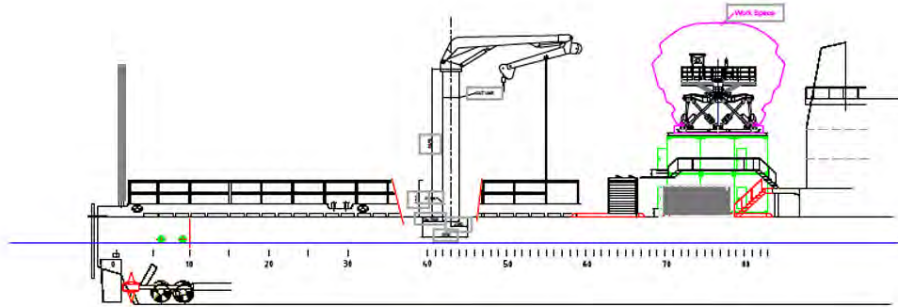




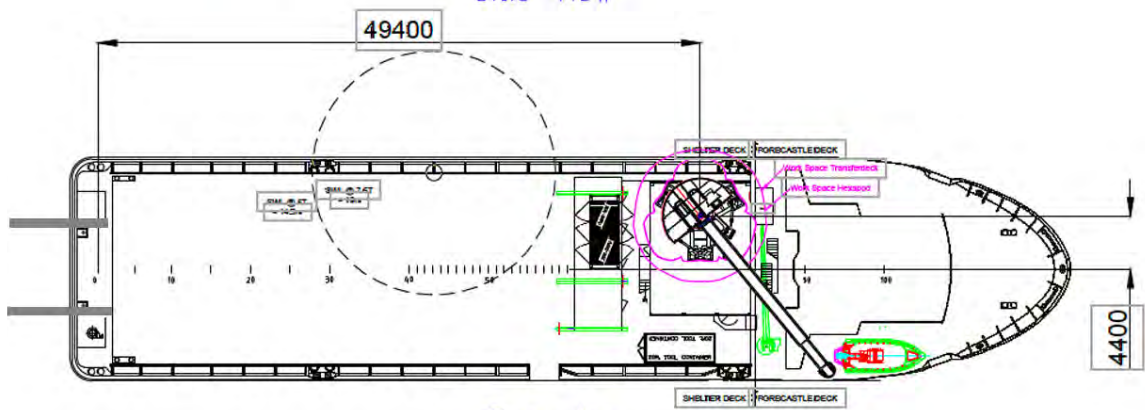
Castle

VESSEL SPECIFICATIONS

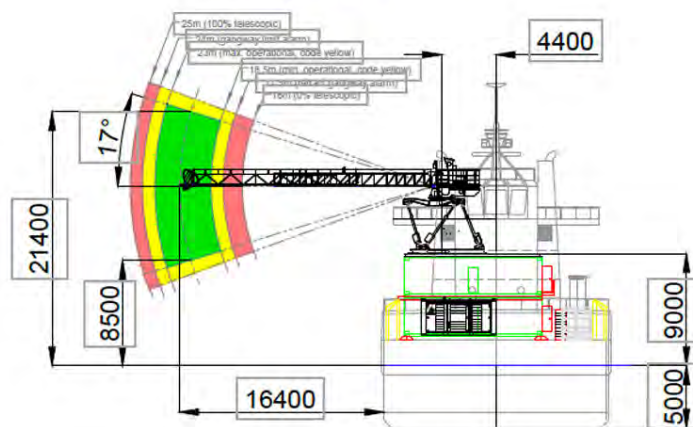
WALK TO WORK WITH AMPELMANN A-TYPE GANGWAY



Side view



Top view



Aft view



Castle

VESSEL SPECIFICATIONS

FUEL CONSUMPTIONS

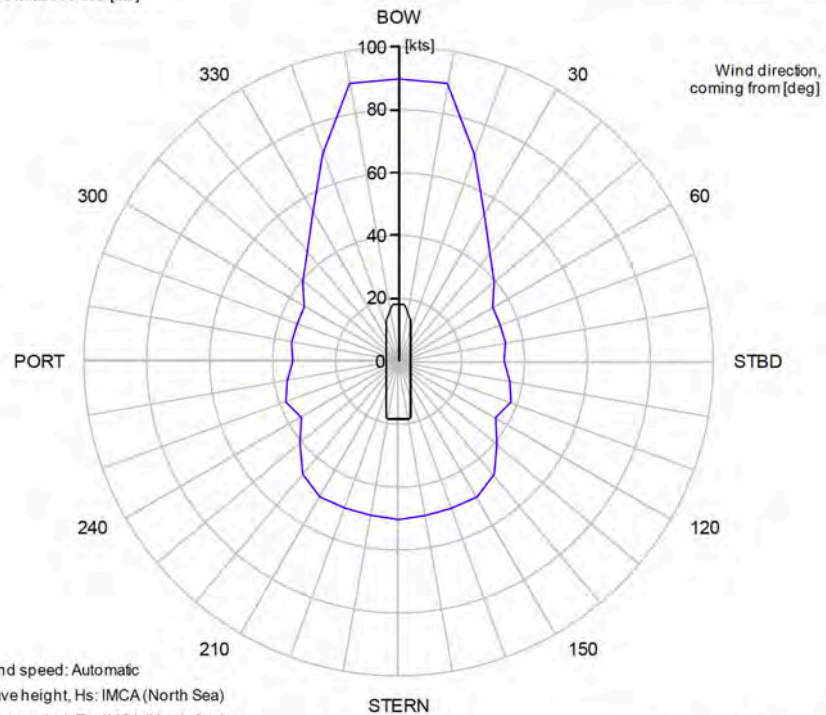
Max Speed—12 Knots	11
Transit Speed—10 knots	10
DP1 Operations	6
DP2 Operations	8
Standby in port / anchor	1.5
m ³ per 24 hours	

DP CAPABILITY PLOT

ERN: 99.99.80.60

VARIABLE WIND AND WAVES
Limiting 1 minute wind speed,
at 10 m above sea [kts]

Thrusters active: T1-T6
Rudders active: R1-R2



Wind speed: Automatic
Wave height, Hs: IMCA (North Sea)
Wave period, Tp: IMCA (North Sea)
Wave direction offset: 0 deg
Wave spectrum: JONSWAP ($\gamma = 3.3$)

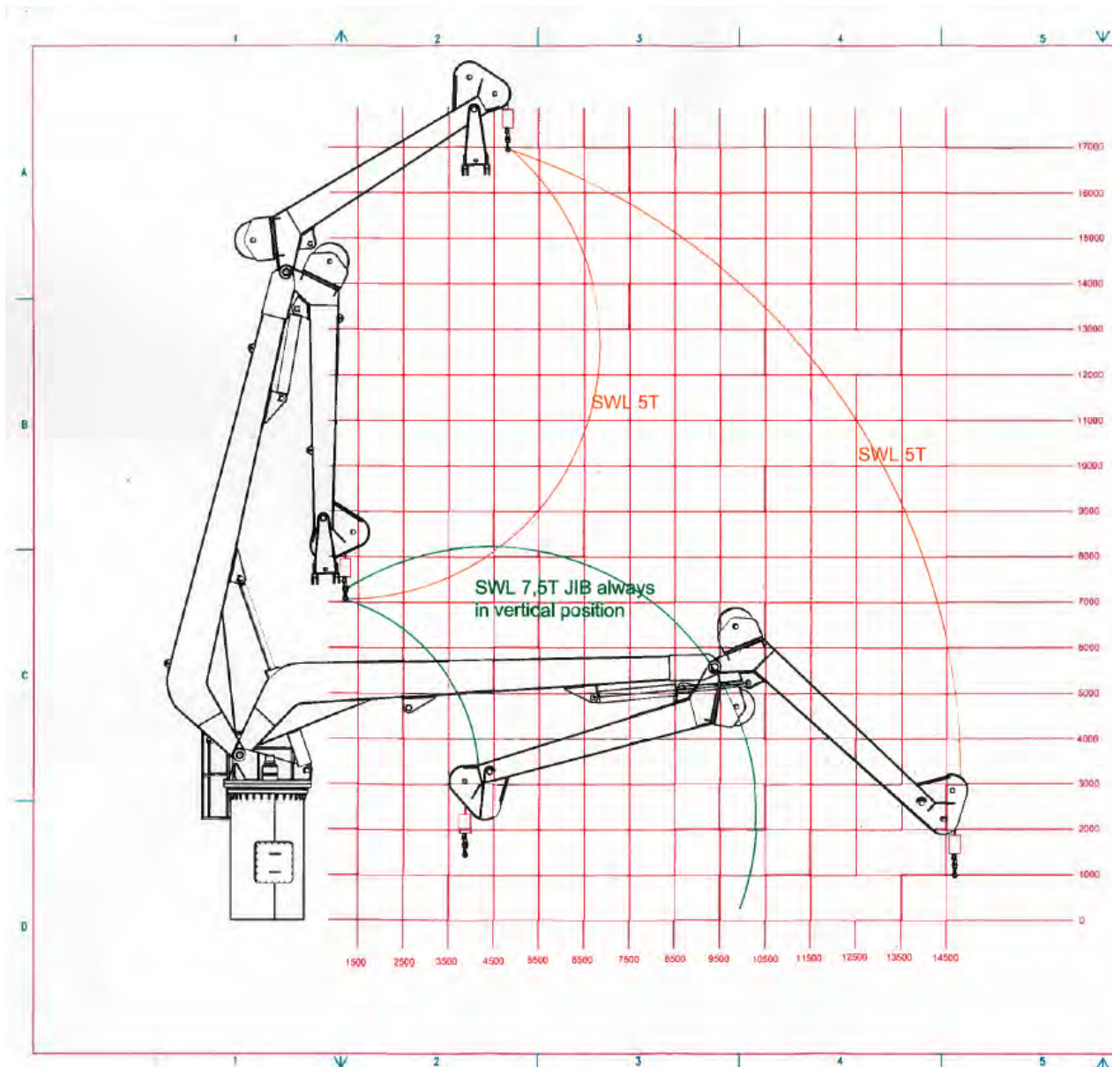
Rotating tidal current: 0.50 knots
Rotating wind induced current: 0 % of wind speed



Castle

VESSEL SPECIFICATIONS

7.5t Knuckle Boom Crane

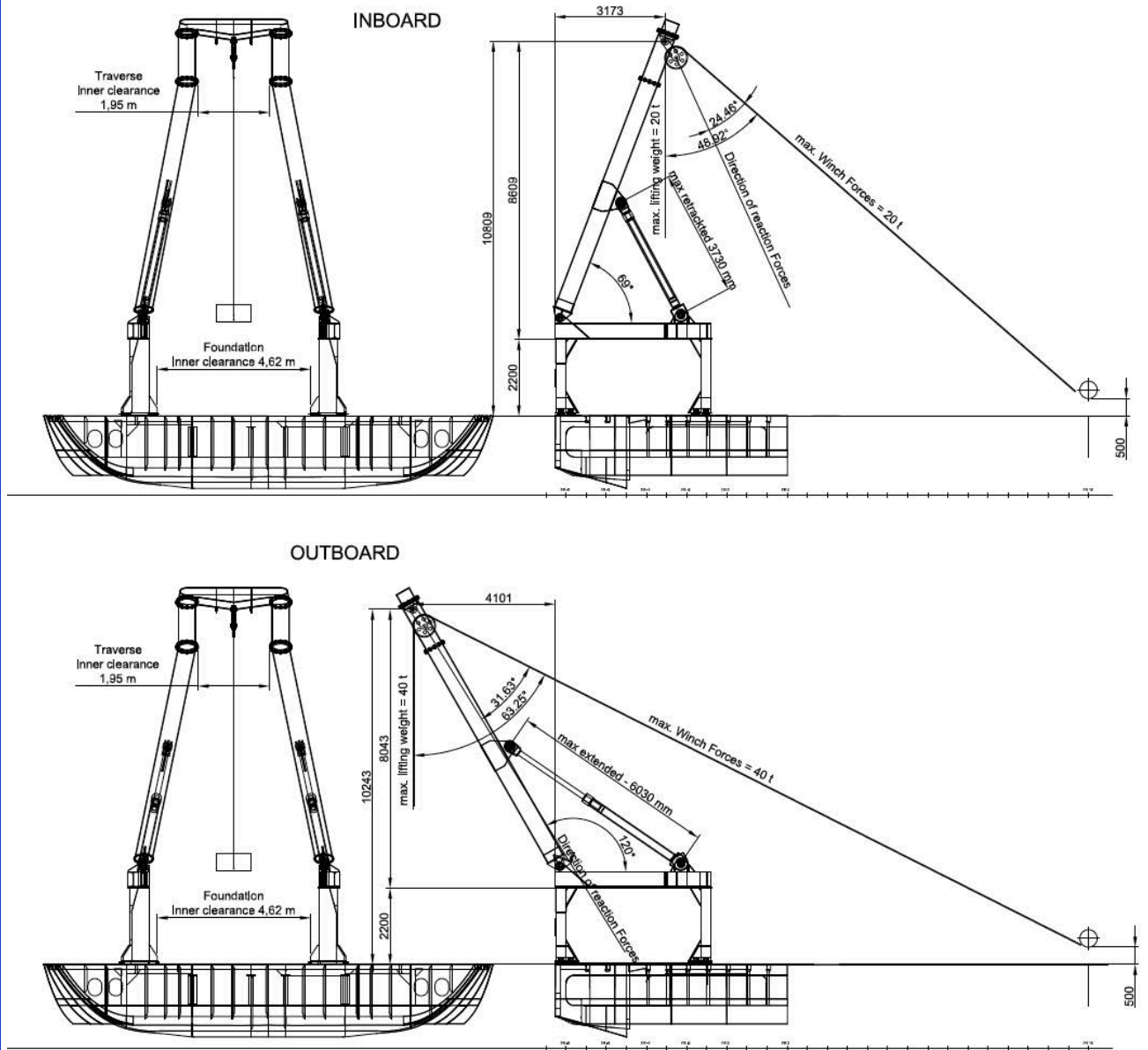




Castle

VESSEL SPECIFICATIONS

40/20 ton "A" frame





Castle

VESSEL SPECIFICATIONS



ATLANTIC DISCOVERY—MULTI-PURPOSE SUPPORT VESSEL



Castle

VESSEL SPECIFICATIONS

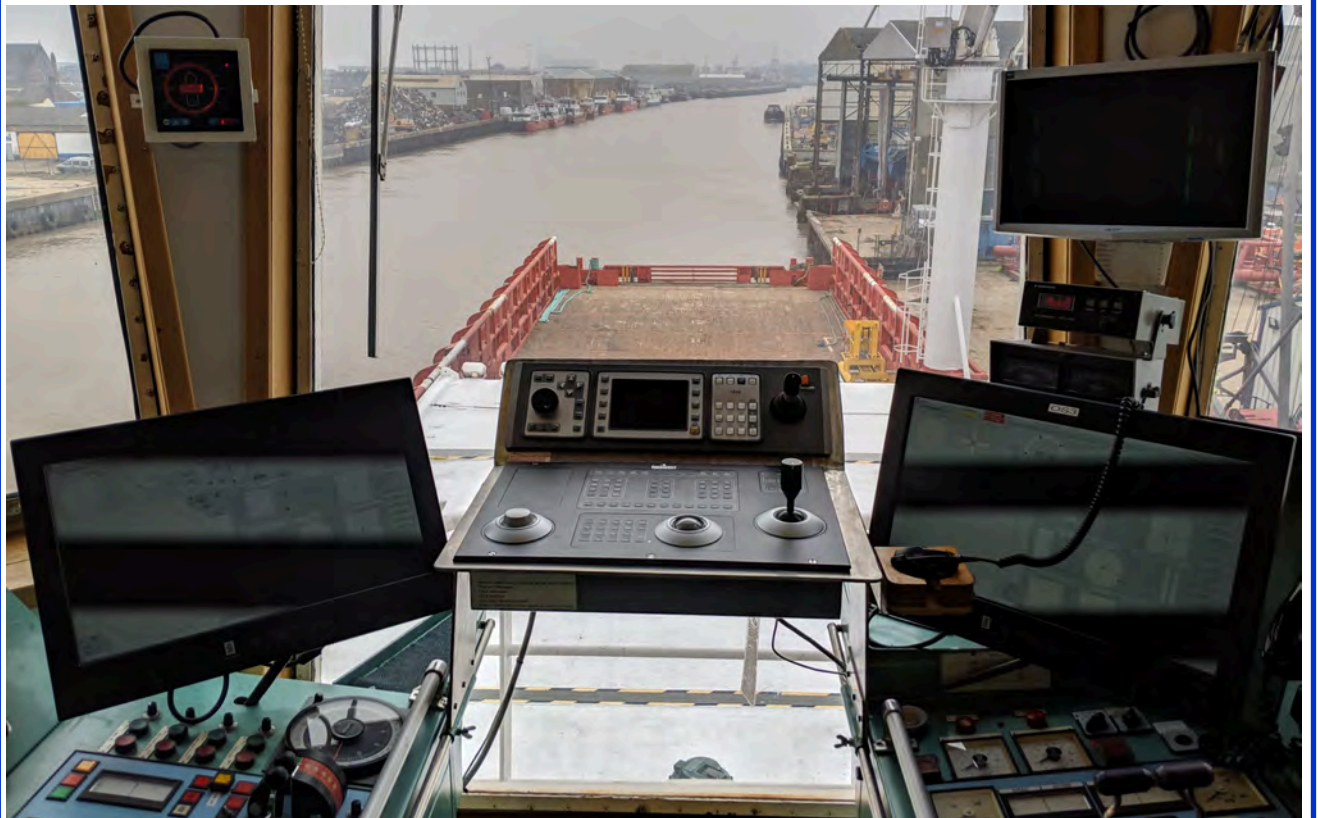


ATLANTIC DISCOVERY—MULTI-PURPOSE SUPPORT VESSEL



Castle

VESSEL SPECIFICATIONS



ATLANTIC DISCOVERY—MULTI-PURPOSE SUPPORT VESSEL



Castle

VESSEL SPECIFICATIONS



ATLANTIC DISCOVERY—MULTI-PURPOSE SUPPORT VESSEL