



## Atlantic Wind - 230ft Class DP2 Supply Vessel



### ATLANTIC WIND

#### Main Particulars

Length	230 ft / 70.1m
Width	56 ft / 17m
Depth	18 ft
Tonnage GRT	1,706
Tonnage NRT	511

#### Capacities

Fuel Oil	151,925 USG - 134,618 USG/505,707M3 transferrable @ 90% capacity
Potable Water	239,652 USG - 73,500 USG transferable
Liquid Mud/Fuel Oil	7,300 BBLs (306,600 USG/1,195 m3)
Dry Bulk	6,740 ft <sup>3</sup>
Ship Potable Water	30,000 USG
Lube Oil	3,000 USG

#### Accommodations

Berths	18
Passengers	11

#### Special Equipment

Fire Monitor	3,000 GPM
--------------	-----------

#### Cargo Deck

Length	160 ft (48m)
Width	49 ft (15m)
Clear Area	7,840 ft <sup>2</sup> / 720 m <sup>2</sup>
Capacity	1,000 LT
Dead Weight	2,825 LT

#### Machinery

Main Engines	2 x Caterpillar 3516B
Main Generators	2 x Caterpillar 3306, 170 kW
Bow Thruster x 2	2 x Caterpillar 3512, 1200
Total Power	HP 6,000 HP
Stern Thruster / Steering	2 x Azimuth Shottel Z-Drives

#### Performance

Speed	10/12 Knots
Fuel Consumption	150/233.1 USG/hr (120 USG/hr on DP)

#### Electronics & Controls

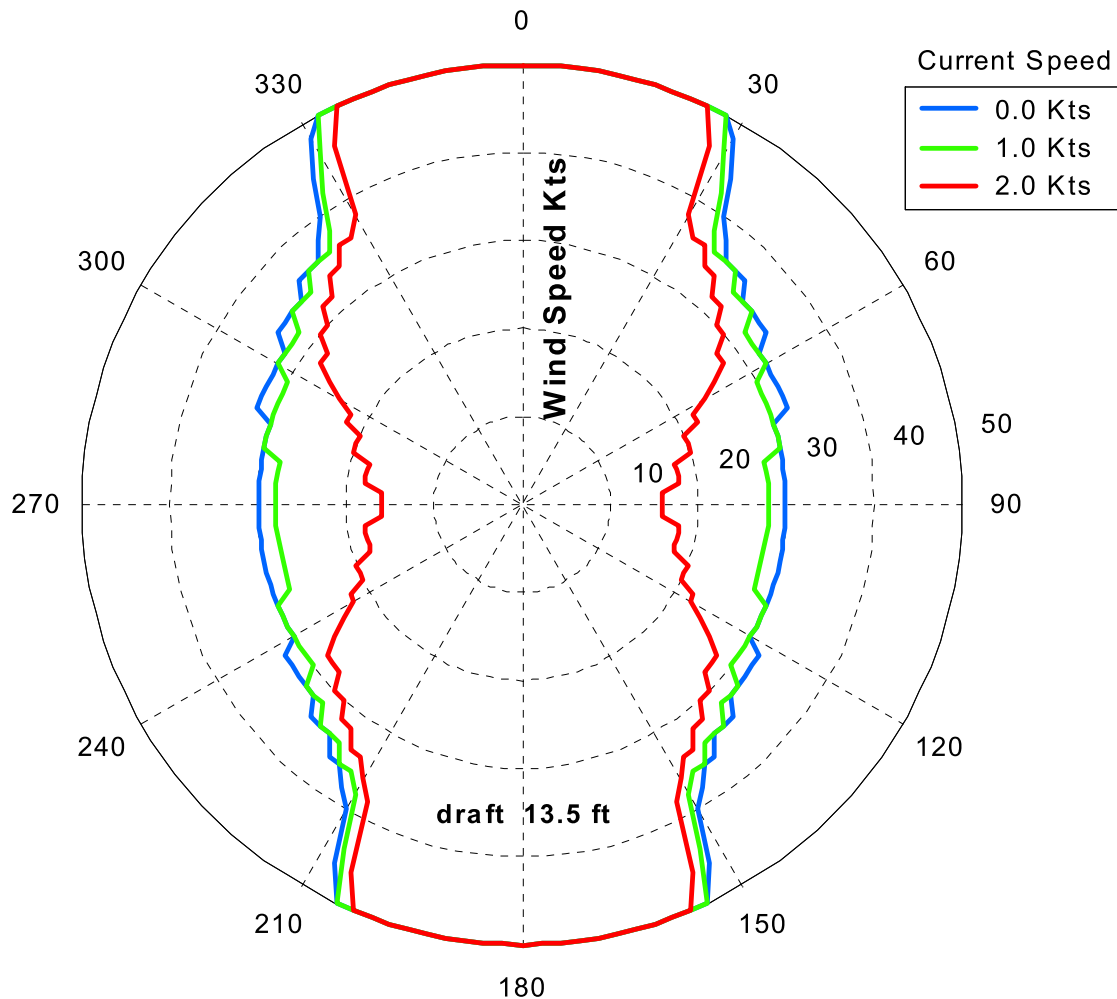
Dynamic Positioning DP System	DP SDP21 Class 2
2 X Radar #1 / GDMSS / Auto Pilot / VSAT	

#### Documentation

Official Number:	
IMO	
Flag	UnitedStates
Year Built	2004
Call Sign	

## 5 Plot Results

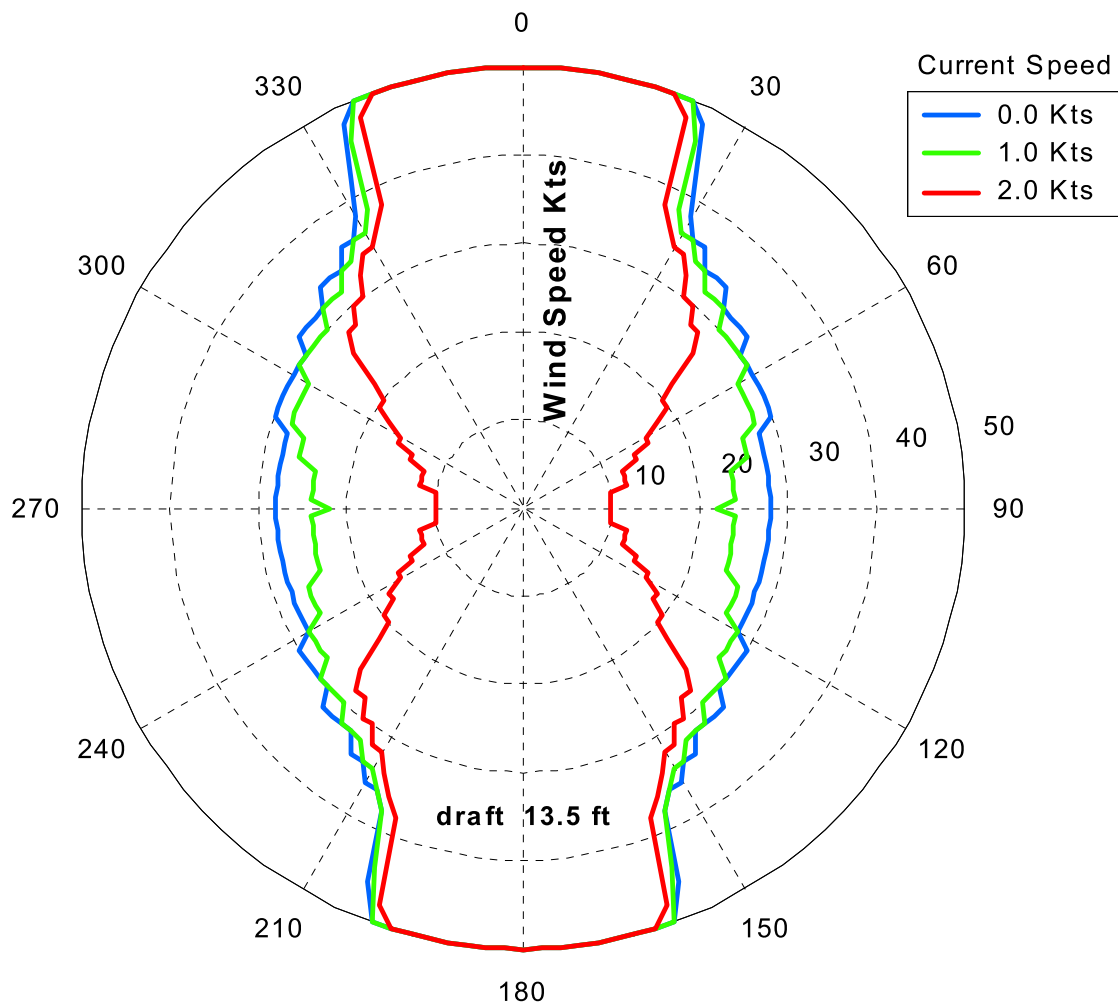
### 5.1 Capability Plot (all Thr 100%).



<u>Propulsors:</u>		<u>Environment:</u>	
#1 Bow thruster	100% thrust	Max wind speed :	50 Kts
#2 Bow thruster	100% thrust	Current Speed:	0-2.0 Kts
#2 SternPort AZ	100% thrust	Colinear environment	
#3 SternStbdAZ	100% thrust		

Figure 1

**5.2 Capability Plot (all Thr 80%).**



<u>Propulsors:</u>		<u>Environment:</u>	
#1 Bow thruster	80% thrust	Max wind speed :	50 Kts
#2 Stern Port AZ	80% thrust	Current Speed:	0-2.0 Kts
#3 Stern Stbd AZ	80% thrust		Colinear environment

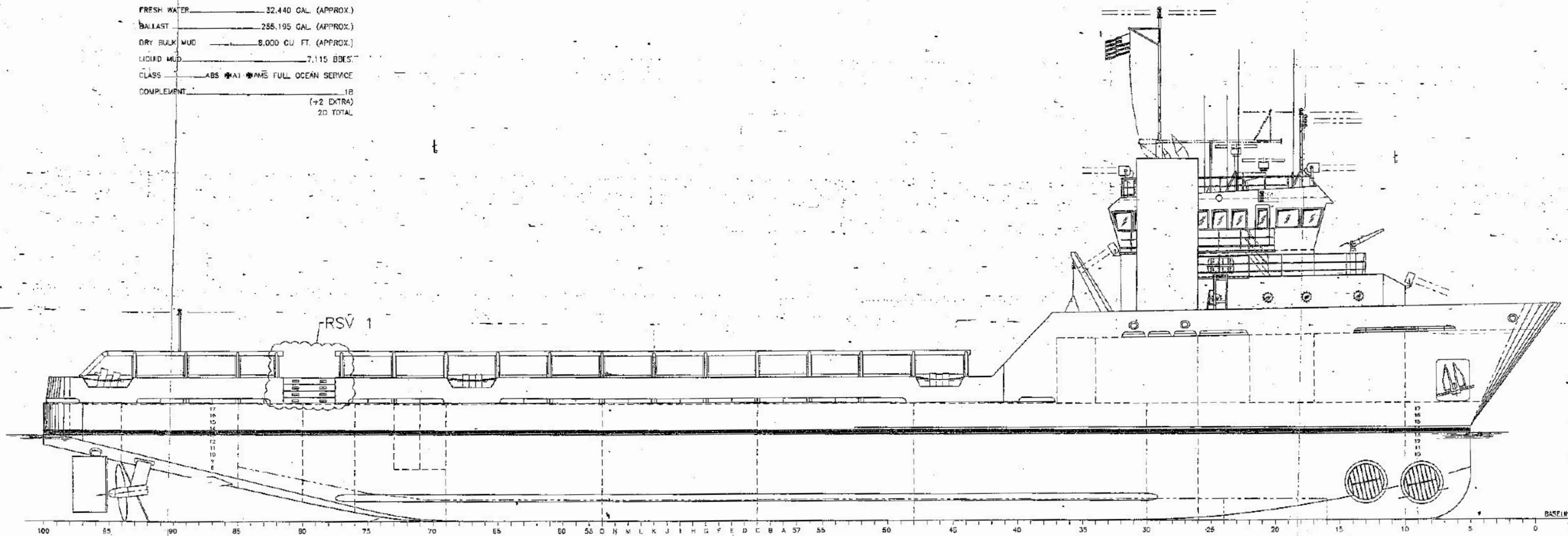
**Figure 2**

**CHARACTERISTICS**

LENGTH O.A. (MLD)	230'-0"
LENGTH BETWEEN PERPENDICULARS	220'-0"
BEAM (MLD)	56'-0"
DEPTH (MLD)	18'-0"
FUEL OIL	182,749 GAL. (APPROX.)
FRESH WATER	32,440 GAL. (APPROX.)
BALLAST	255,195 GAL. (APPROX.)
DRY BULK MUD	8,000 CU. FT. (APPROX.)
LIQUID MUD	7,115 BBL'S
CLASS	ABS *MA1 *AMS FULL OCEAN SERVICE
COMPLEMENT	18 (+2 EXTRA) 20 TOTAL

**RESERVATIONS**

1. RESERVED PENDING OWNER LOCATION & APPROVAL.



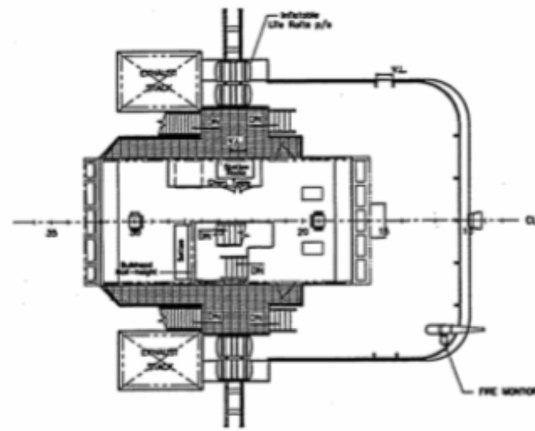
OUTBOARD PROFILE

REV	DESCRIPTION	DATE	APPROV
REVISIONS			
APPROVALS			
ABS	MMJ	APPV	
USCC		OWNER	
<small>This drawing, design, content, and specifications are the property of HALTER MARINE, INC. and are furnished on a non-transferable basis with no expressed understanding that they will not be copied in any manner, used for reproduction, sold, transferred, or used in the production of any other vessel without written permission. The recipient further agrees not to disclose these contents to any other parties except for those specific purposes for which the drawing was issued.</small>			
<b>HALTER MARINE, INC.</b> P.O. BOX 3029 - SACKETTS POINT, N.Y. 11765		Halter Lockport P.O. BOX 225 - LOCKPORT, N.Y. 14094	
<b>230' x 56' x 18' SUPPLY VESSEL</b>			
<b>OUTBOARD PROFILE</b>			
SCALE: 1/8"=1'-0"		DATE: 7/2/01	DWG NO. A-1
DRAWN BY: FJA		CHK'D BY: GR 7/2/01	SHT 1 OF 1
HULL NO. 1946		JOB NO. 1385	REV 0

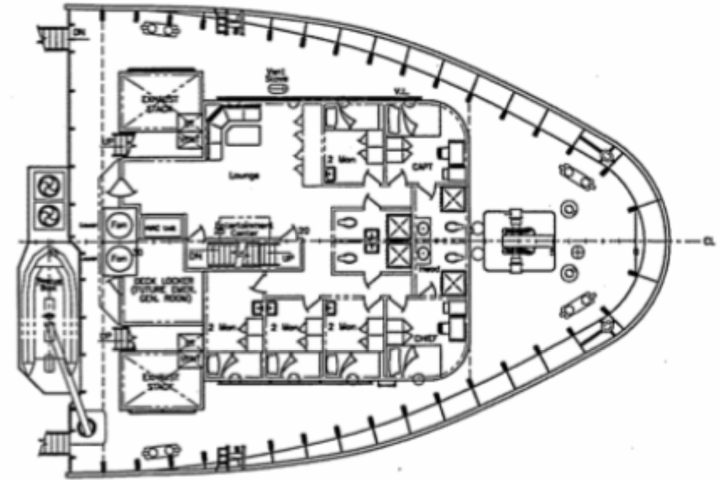
0	1	2	3	4	5	6	7	8	9	10
REVISION STATUS										

OR  
JUL 05 2001

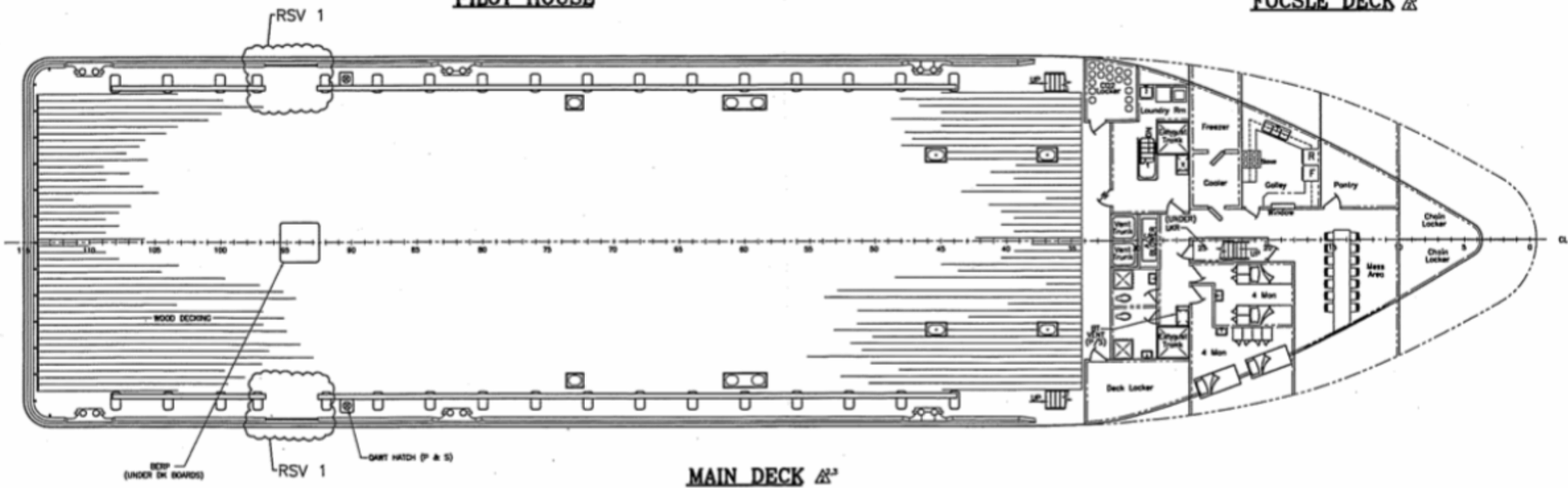
Lockport Management  
JUL 09 2001  
RECEIVED



**PILOT HOUSE**

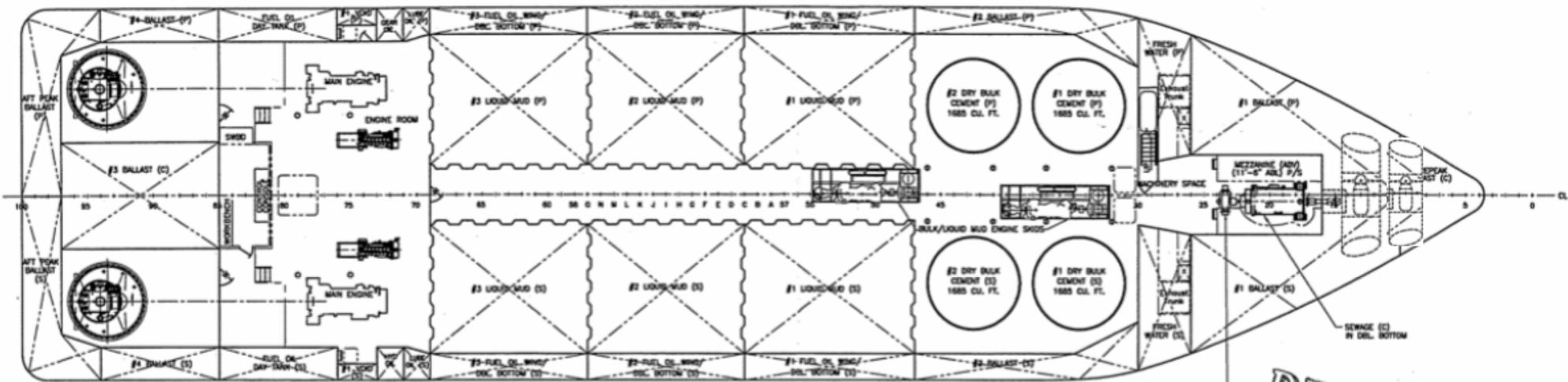


**FOCSLE DECK** Δ

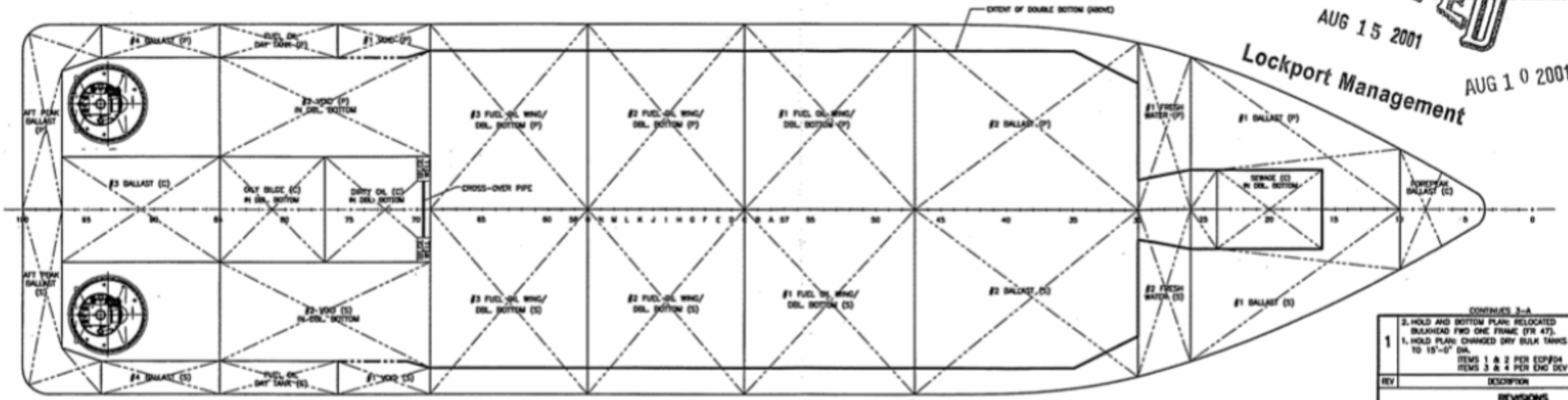


**MAIN DECK** Δ<sup>2</sup>

SCALE: 1/8"=1'-0"	DATE: 08/08/01	DWG NO. A-2
DRAWN BY: TW/RW	CHK'D BY: RC/JP	SHEET 2 OF 3
HULL NO: 1946	JOB NO: L305	REV 2



**HOLD PLAN**  $\Delta^2 \Delta^{1,3}$



**INNERBOTTOM PLAN**  $\Delta \Delta$

**RECEIVED** RESERVATIONS  
 AUG 15 2001  
 Lockport Management  
 AUG 10 2001

228011-372

**CONTRACT**

5. RELOCATED BULK/LIQUID MUD ENGINE SHEDS.	BY	RC
4. ONE FUEL OIL DAY TANK P/S, FR 91-100, WAS TWO FUEL OIL DAY TANKS P/S.	DATE	01/01/01
3. GENERAL REV. TO PILOT HOUSE AND ACCOMMODATIONS ON MAIN DECK AND FOCLE DECK.	BY	RC
2. REVISED LOCATION OF CO2 LOCKER FROM STBD TO PORT.	DATE	07/18/01
1. ADDED 2-DRIVES.	BY	RC
1. 4 IN. DIA. ADDED. HINGEHOLES FOR ACCESS INTO BULK MUD TANKS.	DATE	07/18/01
3. MAIN DECK RELOCATED CUT-OUT AND CHAIN IN BULKWARK (FR 65-81).	BY	RC

*Katuna*

CONTINUES 3-A

1	2. HOLD AND BOTTOM PLANS RELOCATED BULKHEAD TWO ONE FRAME (FR 47).		
	1. HOLD PLANS CHANGED DRY BULK TANKS (P&S) TO 15'-0" DIA.		
	ITEMS 1 & 2 PER EOP&A		
	ITEMS 3 & 4 PER ENG DECV		

REV	DESCRIPTION	DATE	APPROV
<b>REVISIONS</b>			
<b>APPROVALS</b>			
AMS	168 APPEY		
USCG	CHENET		

This drawing, design, contract, and specifications are the property of HALTER MARINE, INC. and are loaned on a confidential basis with an understanding that they will not be used for any other vessel, hull, or structure, nor shall they be altered or modified in any way without written permission. The holder hereby agrees not to disclose these contents to any other party except for those specific portions for which the drawing was made.

**HALTER MARINE, INC.** Halter Lockport  
 P.O. BOX 3028 - GAITHER, VA 20352  
 230' x 56' x 18' SUPPLY VESSEL

**GENERAL ARRANGEMENTS**

SCALE: 1/8"=1'-0"	DATE: 07/18/01	DWG. NO.:
DRAWN BY: T. FEENEY/JW	CHK'D BY: RC	A-2
HALL NO. 1846	JOB NO. L385	SHT 1 OF 2
		REV 2

0987654321	22
SHEET NUMBER	
REVISION STATUS	